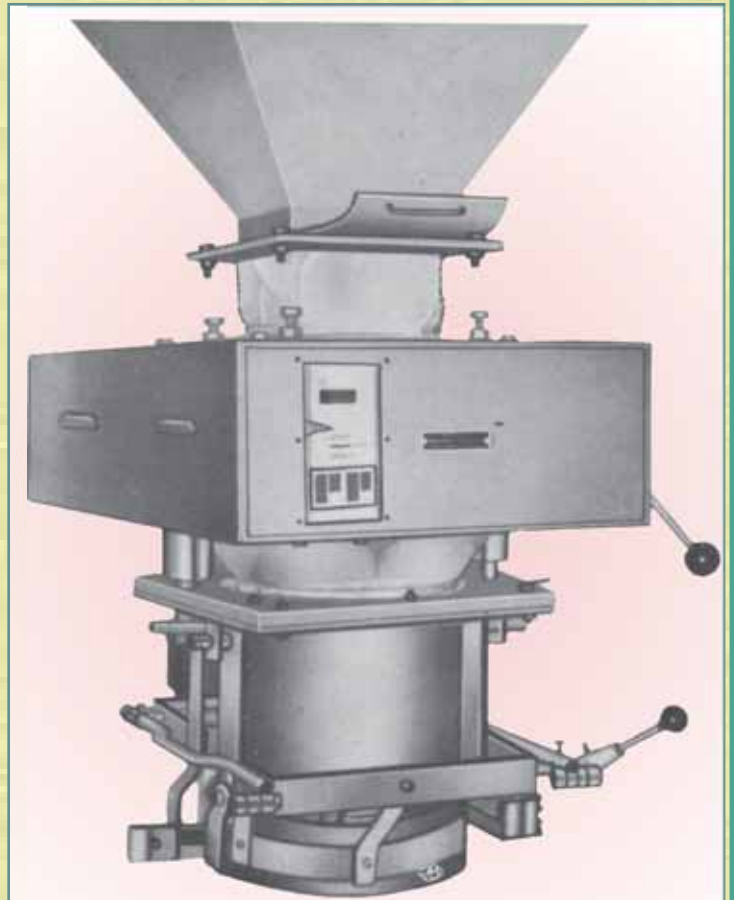
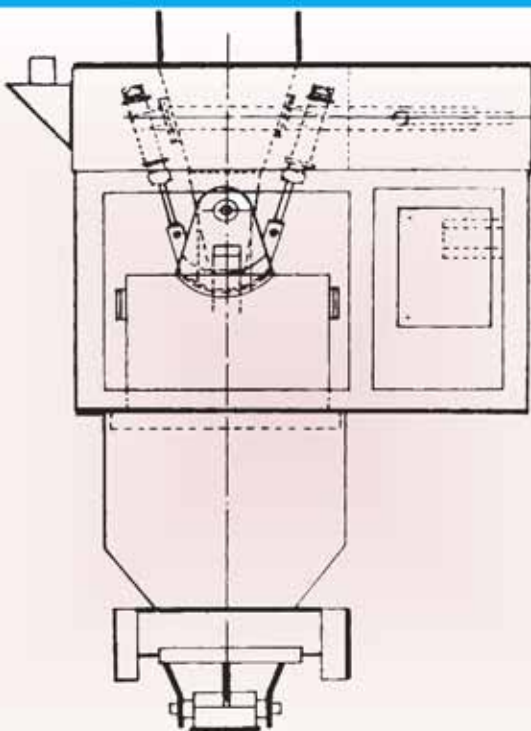


PREMIUM BAG WEIGHER

- ◆ **ACCURATE FILLING**
- ◆ **QUICK FILLING**
- ◆ **HIGH REPEAT ACCURACY**
- ◆ **DUST FREE OPERATION**
- ◆ **NO/LOW POWER CONSUMPTION**
- ◆ **NO LUBRICATION**



MODEL - PBW-MS (Manual Stop)
MODEL - PBW-AS (Automatic Stop)



MODEL - PBW-EPS
(Electro Pneumatic Stop)



MODEL: PBW-MS/AS -SS
(Stainless Steel)

PREMIUM BAG WEIGHER

PREMIUM Bag Weigher is an essential equipment in units producing large quantity of powders and which is to be bagged for convenience in marketing. The contents are accurately weighed and both the buyer and seller can be absolutely sure of weight. This is especially in demand where the value of products is high and the customer is critical.

The PREMIUM Bag Weigher is positioned between the source of powder (like storage bin etc.) and bag stitching machine. The filled bag can then be directly loaded on to the truck.

The operation of the Bag Weigher is very simple. The bag is positioned and clamped by bag holder. The clamping is manual in model MS (Manual Stop) and AS (Automatic Stop) and automatic in EPS (Electro Pneumatic Stop) Model.

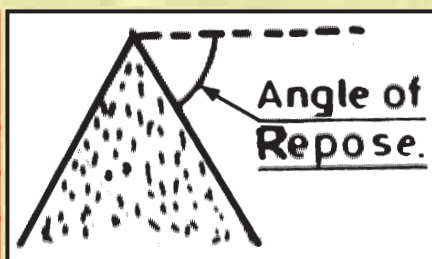
The filling of the bag is started by actuating the filler lever. The Bag Weigher is pre-calibrated when exact quantity of the material is filled in the bag, the flow will be stopped automatically or manually depending on the model. Then the bag is declamped and passed on to the stitching machine.

One of the special features of the PREMIUM Bag Weigher is the flying dust at the time of filling the bag does not come outside the equipment as suitable dust seal is provided which acts as aspirator.

Angle of Repose of some of the Common Materials

1. Bakelite and Similar Plastic powder	- 45	8. Graphite Flakes	- 30 to 44
2. Carbon black Powder	- 30 to 44	9. Rice Hulled or Polished	- 19
3. Cast Iron Chips	- 45	10. Salt Common dry fine	- 25
4. Caustic Soda	- 29 to 43	11. Sand Dry	- 35
5. Cement Portland	- 30 to 44	12. Soda Ash	- 32 to 37
6. Cottonseed dry (Delinted)	- 29	13. Sugar Refined	- 30 to 44
7. Flour wheat	- 35 to 40	14. Wheat	- 28
		15. Zinc Oxide	- 45

FLOWABILITY	ANGLE OF REPOSE
Free Flowing	< 30°
Average Flowing	30° to 40°
Sluggish	< 40°



Angle of Repose of material is the Angle which the Surface of a normal freely formed pile makes to the Horizontal.

Technical Details : All Contact Parts S.S. - 304

MODEL	PBW-MS	PBW-AS	PBW-EPS
01. Number of Valves	1	2	2
02A. Weight Range	25 Kg to 100 Kg	15 Kg. to 100 Kg.	10 Kg. to 100 Kg.
B. Bagging rate Bags/Minute	2/3	4/5	8/12
03. Accuracy under working condition	± 150 Gms	± 100 Gms.	± 100 Gms.
04. Accuracy at full Capacity	± 0.15%	± 0.1 %	± 0.1 %
05. Provision of Flow rate adjustment	Not Provided	Provided	Provided
06. Actuation	Manual	Manual	Electro Pneumatic
06. Final Stopping of flow of material	Manual	Automatic	Automatic
06. Cumulative Bag Counter	Not Provided	Provided Mechanical	Provided Electrical
06. Suitability for free flowing material	Good	Good	Good
06. Suitability for slight sticky material	Good	Good with Screw /Belt feeder	Good with Screw /Belt feeder

Specification & Design are subject to change without notice for any additional improvement.

Manufactured By:

PRECISION PRODUCTS



Plot No. 2009, Phase-IV, GIDC Industrial Estate, Vatva, AHMEDABAD - 382 445. INDIA

Phone : (079) 25830836, 25831440 Fax : (079) 25830965

E-mail : info@premiumprocessequipment.com, exports@premiumpulverisers.com

info@premiumengineers.com, exports@premiumpulverisers.com

Visit us : www.premiumprocessequipment.com, www.premiumpulverisers.com



PROFESSIONALS IN PARTICLE TECHNOLOGY